



one world foundation  
guesthouse & resort

## INFRASTRUCTURE & BUNGALOWS

---

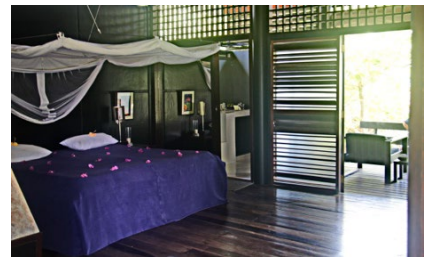
Built in the European-Sinhala style, the Ayurveda Guesthouse & Resort Bogenvillya extends over a spacious tropical garden and consists of both shared and private living areas, Ayurveda therapy rooms, and an undisturbed place for yoga and meditation. Our own well looked-after fresh water swimming pool (12 x 18 m), surrounded by lush vegetation, can be used day and night thanks to underwater lighting.

The main building, Bogenvillya, boasts terraces, a loggia and a salon with a library. It offers the stylish ambiance perfect for inspirational encounters and for the meals taken together which, in addition to a varied breakfast, include a balanced lunch and dinner featuring local, mainly Ayurvedic dishes.

The modern and lovingly furnished rooms are located in the main building and in five adjoining bungalows, each offering individual living comfort. All of the 13 generously designed rooms are equipped with hot water, shower, WC, WLAN and a private lounge area.

### Main Building Bogenvillya

---



Like the resort itself, the main building bears the name "Bogenvillya". It has three rooms and comes as well with terraces, a loggia and a salon with a library. The terraces not only offer a fascinating view of the palm grove but are also an ideal private retreat for rest and relaxation.

#### HIGH SEASON (1 November 2023 to 30 April 2024)

Standard: single occupancy € 160.00, double occupancy € 230.00

#### OFF SEASON (1 May to 31 October 2024)

Standard: single occupancy € 125.00, double occupancy € 190.00



## one world foundation guesthouse & resort

### Araliya Bungalow

---



The Araliya Bungalow, designed by the architect Varuna de Silva from Colombo (Sri Lanka), is surrounded by palm trees and araliya trees ("temple flower trees"). Its four rooms are separated from each other by sliding teak partitions, and all have a spacious bathroom with a shower and a pergola. Thanks to the flexible way the space can be rearranged, this bungalow is particularly suitable for families.

#### HIGH SEASON (1 November 2023 to 30 April 2024)

Standard: single occupancy € 160.00, double occupancy € 230.00

Superior: single occupancy € 200.00, double occupancy € 300.00

#### OFF SEASON (1 May to 31 October 2024)

Standard: single occupancy € 125.00, double occupancy € 190.00

Superior: single occupancy € 150.00, double occupancy € 220.00



## one world foundation guesthouse & resort

### Single-Storey Bungalow

---



Next to the main building Bogenvillya is the Single-Storey Bungalow. It has a spacious bedroom on the first floor, a living room or bedroom below, as well as a private interior courtyard. Thanks to its generous rooms, this bungalow is particularly suitable for families with children.

#### HIGH SEASON (1 November 2023 to 30 April 2024)

Single occupancy € 200.00, double occupancy € 300.00

#### OFF SEASON (1 May to 31 October 2024)

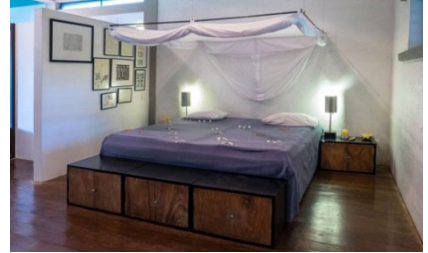
Single occupancy € 150.00, double occupancy € 220.00



## one world foundation guesthouse & resort

### Garden Loft

---



The Garden Loft comprises an extremely spacious room (about 140 m<sup>2</sup>) with open, comfortably furnished living areas. Its extensive terrace, with direct access to the palm grove, is the perfect place to linger a while and relax.

#### HIGH SEASON (1 November 2023 to 30 April 2024)

Single occupancy € 245.00, double occupancy € 345.00

#### OFF SEASON (1 May to 31 October 2024)

Single occupancy € 195.00, double occupancy € 280.00



## one world foundation guesthouse & resort

### Lagoon Bungalow

---



The Lagoon Bungalow, designed by architect Carl Pruscha, stands directly on the shore of the lagoon. Based on a simple modular system of iron, wood and glass, three unpretentious transparent living units were created. Each room in this pile dwelling has its own terrace overlooking the lagoon with its tropical vegetation and wildlife. Room no. 3 has a direct view of the sea.

#### HIGH SEASON (1 November 2023 to 30 April 2024)

Standard: single occupancy € 160.00, double occupancy € 230.00

Superior: single occupancy € 200.00, double occupancy € 300.00

#### OFF SEASON (1 May to 31 October 2024)

Standard: single occupancy € 125.00, double occupancy € 190.00

Superior: single occupancy € 150.00, double occupancy € 220.00





## one world foundation guesthouse & resort

### Palm Grove Bungalow

---



To get to the Palm Grove Bungalow, you pass over a small bridge over the lagoon that traverses the Bogenvillya. According to plans by architect Carl Pruscha, two generous, transparent living units were created, with partly covered terraces as well as direct access to the garden and the sea. From this bungalow, you enjoy a beautiful view of the flora and fauna.

#### HIGH SEASON (1 November 2023 to 30 April 2024)

Single occupancy € 245.00, double occupancy € 345.00

#### OFF SEASON (1 May to 31 October 2024)

Single occupancy € 195.00, double occupancy € 280.00



## one world foundation guesthouse & resort

### House Above Trees

---



The House Above Trees was designed by architect Carl Pruscha in a style inspired by Sri Lanka's Buddhist temple architecture of the late Middle Ages. A lawned ramp ascends to an external staircase that leads to the spacious terrace. Continuous ventilation of the room is ensured by means of the cross ventilation system familiar in tropical architecture. At a height of 6 metres, the actual building is located between the palm treetops with a view of the sea. A green belt of mangrove trees at the foot of the House Above Trees leads directly to the Indian Ocean.

#### HIGH SEASON (1 November 2023 to 30 April 2024)

Single occupancy € 245.00, double occupancy € 345.00

#### OFF SEASON (1 May to 31 October 2024)

Single occupancy € 195.00, double occupancy € 280.00

Room prices are valid until 31 October 2024. They are all inclusive, i.e. meals (full board), alcohol-free drinks, coffee & tea. For the festive dinners on 24, 25 and 26 December, as well as on New Year's Eve and New Year's Day, an extra charge of € 35.00 per person will be charged. Government taxes (VAT and NBT) currently totaling 18 percent are not included. The VAT rate depends on the respective regulations of the Sri Lankan tax office.

In the period from 1 April to 31 May, and from 1 September to 31 October, we grant guests staying at least 10 days, combined with an Ayurvedic cure, a discount of 10 percent on the room rate.